

WinTV-USB2-Stick Quick Installation Guide

© 2007 Hauppauge Computer Works · QI-WINTV-USB2-STICK-V1.0-ENG · 2007/06/28

Hauppauge Computer Works, Ltd.
10 Borough High Street
Bank Chambers
London, UK, SE1 9QQ
www.hauppauge.co.uk

Tech Support: (+44) 0207 378 0202
Telephone: (+44) 0207 378 1997
Fax: (+44) 0207 357 9171
support@hauppauge.co.uk

Hauppauge Computer Works, Inc.
91 Cabot Court
Hauppauge, NY 11788
www.hauppauge.com

Tech Support: (+1) 631 434 3197
Telephone: (+1) 631 434 1600
Fax: (+1) 631 434 3198

Included in this package

- WinTV-USB2-Stick
- USB extension cable
- Audio/Video input cable
- SCART to Audio/Video cable.
- IR remote control transmitter and 2 batteries.
- WinTV Installation CD-ROM including the following software components:
 - WinTV application with SoftPVR™
 - WinTV-Scheduler
 - WinTV Utilities
- Ulead MovieFactory 4.0 SE CD-ROM
- This installation guide



1. Connecting the WinTV-USB2-Stick

1. Locate a free USB 2.0 port (normally located at the side or back on the computer). Due to power and bandwidth requirements, we do not recommend connecting the unit into a USB Hub.
2. Turn your PC on, wait until Windows has completely started.
3. Plug the WinTV-USB2-Stick stick into the USB 2.0 port. You can use a USB extender cable to locate the WinTV-USB2-Stick a short distance from the USB slot.

Page 1

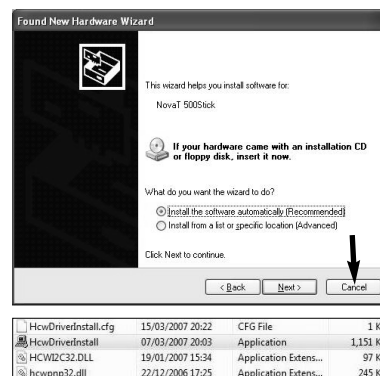
Note: if you plug the device into a different USB socket, you will need to reinstall the WinTV-USB2-Stick driver, but you will not need to reload any WinTV applications.

Plug your TV antenna into the WinTV's TV Connector.

2. Install the WinTV Stick driver

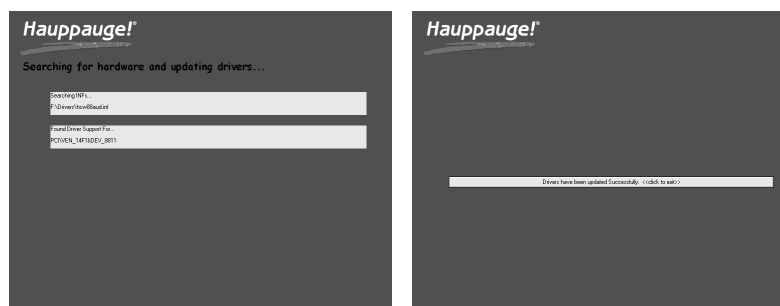
Note: If you have any anti-virus software enabled, please disable it during the installation of the software.

When you attach the WinTV-USB2-Stick, the **Found New Hardware Wizard** will appear, Click on **Cancel**.



Insert your **WinTV Installation CD-ROM** and browse to the files on the disc. Double click on the file called **HcWDriverInstall**.

You will then be presented with a blue screen which will begin installing and updating the drivers for your product.



Page 2

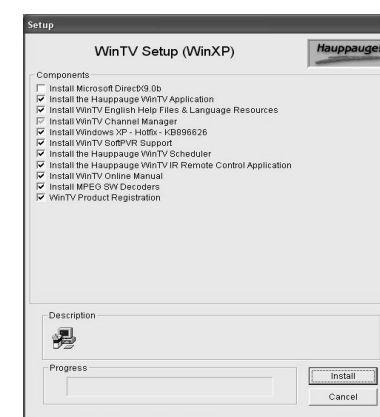
3. Install the WinTV® application

To install the WinTV application, browse back to the files on your Installation CD-ROM, double click on the file called **Setup**.

Select your language for the installation, English is default, and click **Next**.

It is recommended to leave the default components ticked and select Install and follow the on screen instructions.

Once the installation is complete the WinTV Icon will appear on the desktop.



Installing the Ulead MovieFactory application (optional)
To start installing the Ulead MovieFactory application, insert the Ulead MovieFactory installation CD-ROM and browse to the files on the disc, double click on the file called **Setup**.

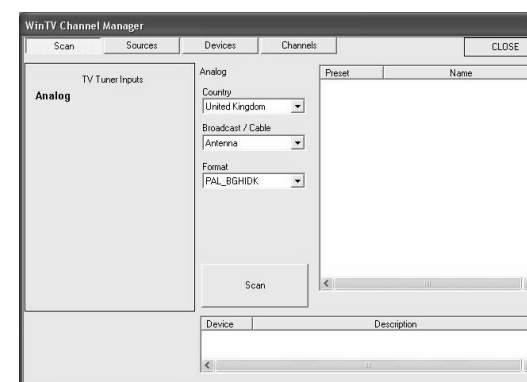
Follow the on screen instructions, once the installation is complete you may need to restart your computer.

To use Ulead MovieFactory 4.0, please refer to the electronic manual from **Start / All Programs / Ulead**.

4. Scanning for channels

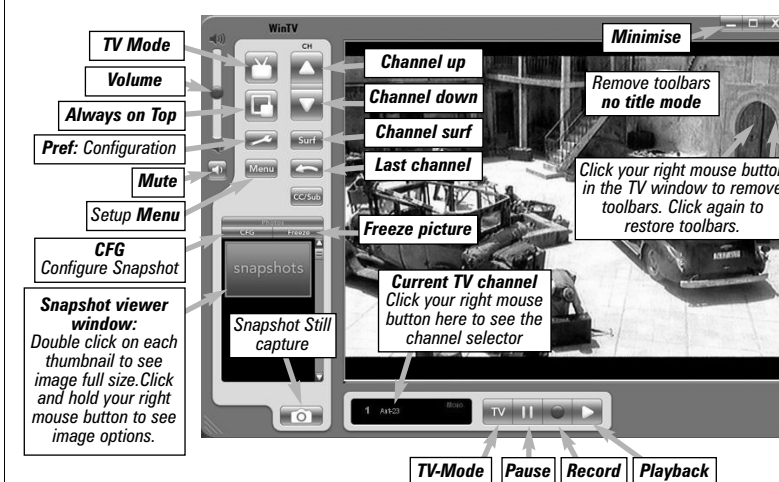
To start the WinTV application double click on the **WinTV** icon. When you run WinTV for the first time, a message will appear asking you to scan for tuner channels now.

Select your country location, for instance, select United Kingdom and then, select Scan. Once the scanning has finished click on **Close**.



Page 3

Watch TV



Changing channels

You can change channels by using the Channel Up or Channel Down buttons on the WinTV. You can type a channel number (for example: 27) and WinTV will tune to that channel. If the entered channel does not exist, you will see a black window.

You can also right click in the Current TV channel box, where you will see a list of channels. Or type letters (for example: BBC) to access to the list of the channels including these letters.

TV Mode

When you click the Full screen TV button, TV will appear full screen on your PC monitor. When finished watching TV full screen, click your right mouse button in the TV window. If you see video with a black box around it, click the Pref button then click TV mode tab. Check the box which says "Allow resolution change".

"Always on top" Mode

The WinTV application will remain in view over any other applications even if it is not selected. To turn on, click the Always on top button. It will turn green. To turn off, click this button again. A convenient way to use Always-on-top is to make the TV window in the no-title mode small, and to make the TV window in the title mode larger. Then you can switch from a small window to a larger one by clicking the right mouse button.

Page 4

⚙ Pref button

Click the **Pref button** to open the preferences menu:

View: These are the settings for the On Screen Display of the TV channel and Audio Volume, where you can enable Close Captions (if supported in your system configuration), plus controls for the Toolbar mode (Title mode), NoToolbar mode (No Title) and Full Screen (TV mode).

Movies: Here is where you configure some video and audio settings. You can set the movie record directory (DVCR Record File Path).

Snapshot: Set the size of your captured images, plus single or two field captures for capturing motion or still image video.

Audio: Your audio settings are configured here.

☰ Menu Button

Click the Menu button to open the TV setup menu. Here is the main control bar for TV channels, and duplicate controls for other functions:

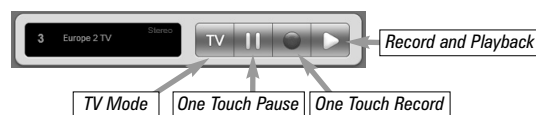
Suite-Manager: Configure the TV tuner (scanning, naming, channel pre set, etc..) and setting up favourite channel lists.

Configuration: Duplicate configuration menus for colour, audio, etc.

View: For settings an exact TV window size: 320x240, 640x480 etc.

Record and Pause

There are three buttons to control the watching, recording and pausing of TV. Clicking on the **Pause** button will cause the Pause menu to roll down from the WinTV application, while clicking on the **Record** button will cause the Record menu to roll down.

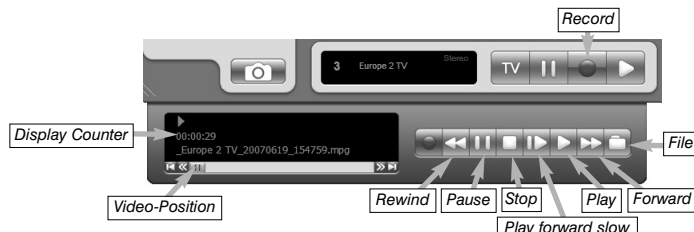


The **One Touch Pause** button prepares the WinTV pausing live video. Click the **One Touch Record (OTR)** button will start a record session. If you click OTR more than once, a record timer will be set and the recording will be done for 15 minutes for each time the OTR button is clicked. For example, if you click the button 3 times, the WinTV will record for 30 minutes.

Click on the **One Touch Record** button on the WinTV application to open the Record and Playback control bar.

Page 5

One Touch Record



Clicking the **Record** button will automatically generate a file name and start recording your audio/video program.

Functions:

- When recording TV, the record button will depressed
- A time counter will be shown indicating the length of time of the recording

If you click **Stop** the time counter will revert back to 00:00:00

The time is specified in a **Hour:Minute:Second** format.

⏹ Stop

Clicking the **Stop** button will stop the video you are recording or playing back.

▶ Play

Clicking the **Play** button will playback from disk the last video file created. When playing a video, you can rewind, fast forward, replay 10 sec or skip forward 10 sec using the buttons on the control bar.

⏸ Pause

Clicking the **Pause** button while Playing will pause your audio/video.

⏮ Rewind

Clicking the **Rewind** button will play the video file in reverse. Clicking the Rewind button again will continue the playing of the video.

⏭ Fast Forward

Clicking the **Fast Forward** button one time will fast forward your video at 2X speed. Clicking the Fast Forward button two times will fast forward your video at 8X speed. Clicking the button again will continue playing back at normal speed.

⏩ Slow Motion

Clicking the **Slow Motion** button during playback will cause the video to play in slow motion (at 1/2 speed). Clicking the Slow Motion button again will return the video to normal playback speed.

Page 6

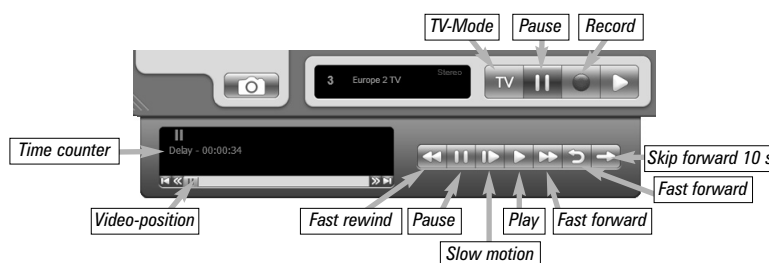
📁 File button

Clicking the File button opens the File menu. The last file recorded is listed in the File name box. In the File menu you can:

- **Rename your recorded video file:** To rename a video file, find the file you would like to rename, highlight it with your mouse, and click and hold the right mouse button. Go down to Rename and then you can type in a new name. Remember: you must keep the MPG extension on the file.
- **Play a video file previously recorded:** Find the file you would like to play, highlight it with your mouse (one click of the mouse button) and click Open. Then click the Play button.
- **Delete recorded video files which you no longer want:** Click your right mouse button on the video file once, go down the menu and click Delete.

One Touch Pause

The pause mode allow you to pause the Live TV picture and allows you to use the TimeShift function to rewind and fast forward the TV. Clicking the **Pause** button on the WinTV application starts the **Pause mode**. The Pause Menu will drop down.



Pause Buffer

The Pause buffer is space on your hard disk where video is stored during the Pause mode. The maximum amount of time which your TV program can be delayed is dependent upon how much storage space you have set for the Pause buffer.

Clicking the **Pause** button makes WinTV to start recording into WinTV's Replay Buffer. It takes about 10 seconds for the Replay Buffer to be initialized and for Pause to become effective.

Unclicking the Pause button will cause the audio/video program to start playing from the point where the button was originally pushed.

Most WinTV functions are active while in the Pause or Pause Live mode. For example, you can change volume, resize the TV window, go into "no-title mode", etc.

While in Pause mode, the Video Position bar shows the amount of the Replay Buffer which is filled with video. For example, if the Video

Page 7

Position indicator shows halfway, it means that half of the Replay Buffer is filled. If you find you cannot Pause as many minutes as you would like, increase the size of the Replay Buffer.

While in Pause mode, the A/V stream is always saved in the Replay Buffer. To stop saving the A/V stream in the Replay Buffer, you must exit the Pause mode by clicking **TV mode**.

⏮ Replay

While in the Pause mode, hitting the **Replay** button acts like the Instant Replay you see on TV broadcast sporting events: the audio/video goes back in time and you repeat what you have previously seen. Each click of the Replay button causes audio/video to go back 10 seconds. For example, if you want to repeat the audio/video you saw 10 seconds ago, you would click the Replay button once. If you want to see the video you saw one minute ago, you would need to click the Replay button six times.

For extended replay times, you might find it more convenient to grab the Video Position indicator control bar and move it to the left. Once you let the control bar go, audio/video starts to play (it might take a few seconds for the WinTV application to start playing).

You might have to move the Video Position indicator to the left and right to find the desired spot to start replaying audio/video.

While Replaying, your audio/video program continues to be recorded in the Replay Buffer. Therefore, if you have clicked the Replay button 3 times (so that you are replaying the audio/video seen 30 seconds ago), the video you see in the WinTV window will be 30 seconds behind the live program.

⏭ Skip Ahead

Clicking the **Skip** button will skip the video ahead 10 seconds.

⏮ Rewind

Clicking the Rewind button while playing video will rewind the recorded video. Clicking the Rewind button again will continue the playing.

⏩ Slow Motion

Clicking the Slow Motion button while playing video will play in Slow Motion. Clicking the Slow Motion button again, will continue playing normally.

⏭ Fast Forward

Clicking the Fast Forward button one time will fast forward your video at 2X speed. Clicking the Fast Forward button two times will fast forward your video at 8X speed.

Page 8

5. Using an external source

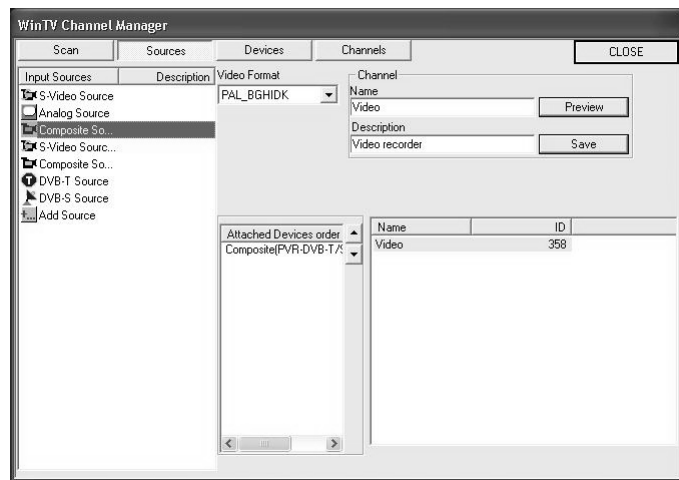
If you are using an external source like a Hi-8 Camcorder, Video recorder etc, then you will need to connect via the Audio Video Input cable.

Note: *Unless stated most VCR's and STB's only output in composite via Scart, a Scart to S-Video lead, in most cases, will not work correctly and will only yield a black and white picture.*

Configuring an external source in WinTV

In the WinTV application click on Menu then Suite Manager, then click on the Sources tab. To add the S-Video or Composite channel select the option on the left and then select the Video Format from the drop down list.

Note: *Pal BGHDK is the commonly used format in Europe.*



Type in a channel "Name" e.g. Video and a Description and then click on "Save" the channel will now be added and if you click on Close you will be returned back to the main TV viewing window.

Page 9

6. Keyboard shortcuts

Sound up - Page Up
Sound down - Page Down
Plus (+) - Channel Up
Minus (-) - Channel Down
Ctrl T - Frame TV
Ctrl P - Frame Print
Ctrl F - Still image
Ctrl M - Default settings
Alt M - Re-size TV menu
0-9 - Channel number
Space bar - Take a Snapshot

7. WinTV-Scheduler

WinTV-Scheduler allows you to schedule the recording of TV shows. WinTV-Scheduler, once it is set, can be closed, and the WinTV application will "wake up" at the desired time and tuned to the desired channel.

After installation, WinTV-Scheduler can be found by going to **Start / All Programs / Hauppauge WinTV**.

To set up an event for timed watching or recording, click on the **Add Program**.



WinTV-Scheduler works by using the Windows Task Scheduler to launch WinTV at the chosen time. WinTV-Scheduler sets up a command line in Task Scheduler to run WinTV, specifying a TV channel and a length of time to record.

Note: *You cannot access the Wing settings until you have purchased the optional transcoder software, for more information see www.hauppauge.com/wing. Please refer to the WING manual for information on using the Wing settings.*

Page 10

Remote Control Buttons

When watching live TV

Go: Open the "WinTV Remote" menu, allowing you to start the WinTV application

Power: Exit the WinTV application (as the Green button)

TV: Start WinTV (as the Red button) / Full screen TV mode on/off

Videos: No Function (reserved for the MediaMVP)

Music: No Function (reserved for the MediaMVP)

Pictures: No Function (reserved for the MediaMVP)

Guide: No function

Radio: No function (reserved for products with FM radio support)

Arrows & OK: Select and confirm options in the WinTV Remote menu or the Windows task list.

Back/Exit: Stop a recording / Exit pause mode and close the PVR tray (as the Stop button)

i-Menu: Brings up the Windows task list. Use the left and right arrows to change to other Windows tasks, and click OK. i-Menu is an always active button.

Vol+ and Vol- buttons: Control the audio volume

Mute: Audio on/off

Ch+ and Ch- buttons: Select the next/previous channel

Prev.Ch: Swap to last viewed channel

Record button: Open the PVR tray & start a recording. See section Remote Control Buttons during a Recording

Stop button: Stop a recording / Exit pause mode and close the PVR tray (as the Back/Exit button)

Play button: Open the PVR tray & play back the last recording. If you have not recorded any TV shows recently, it will open the MyVideos folder. See section Remote Control Buttons during Pause TV or Playback

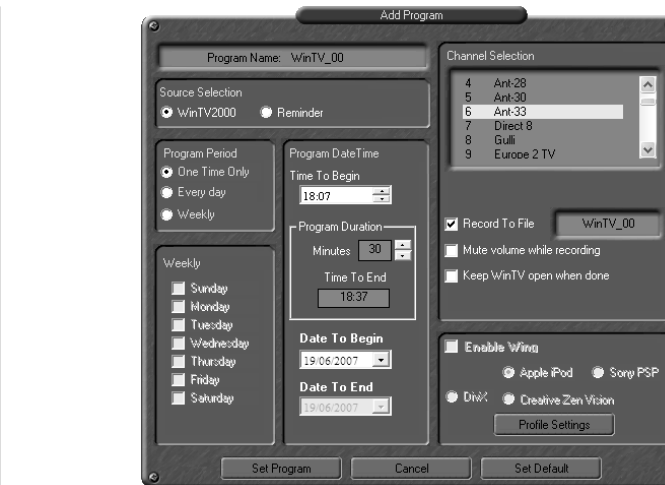
<< (Rewind): Swap between Title and No-Title mode

>>: Turn to Full screen TV mode

Pause button: Open the PVR tray & pause live TV (pause mode). Clicking again will play from the point where the button was originally pushed



Page 13



The items that need to be set for each event are:

● **Source selection:** leave set at WinTV to bring up the WinTV at the requested time and on the requested channel. Select Reminder to just pop-up a text box as reminder.

● **Time to Begin Program:** set to the desired start time. The default time is about 3 minutes from the current time. Click on the hour to set the hour, the minute to set the minute to start the program.

Note: *It is always possible that your TV show will be transmitted in advance or late, and it takes about 10 seconds to launch the WinTV and set up for recording. Please set the Time to Begin Program few minutes before the time your TV show should start.*

● **Program Duration:** set the duration of this event, using the arrows (steps of 30 minutes) or directly the keyboard. This will update the Time to End Program window.

● **Date to Begin:** today date is the default. Change this if you want to schedule on another date.

● **Program Period:** One Time Only, Every day or Weekly are the choices. If you select the Weekly option, select the day you would have the show recorded too.

● **Date to End:** today date is the default. If you have selected Every day or Weekly option, you must change this date. Typically, the TV show programming change at summer, so do not enter a Date to End in years (except for the 8:00 PM News).

● **Channel selection:** chose one of your scanned channels.

Page 11

>I (Skip): Surf Mode on/off

I< (Replay): Swap to previous channel (as the Prev.Ch button)

0-9: Direct access to channel number

Text (*): Start VTPlus teletext application (if installed)

Sub/CC (#): Sub-titles / Closed Caption on/off - if available on the channel - (as the Yellow button)

Red button: Start the WinTV application (as the TV button)

Green button: Close the WinTV application (as the Power button)

Yellow button: Sub-titles / Closed Caption on/ off - if available on the channel - (as the # button)

Blue button: Make a Snapshot

During a Recording

Note: *Most WinTV functions and remote buttons are disabled when recording*

Record button: Set the duration of the recording, by steps of 15 minutes up to 2 hours, then by steps of 30 minutes up to 4 hours (like the OTR button). Clicking again will disable recording duration. This information is displayed in the PVR tray.

Stop button: Stop recording and close the PVR tray (as the Back/Exit button)

Pause button: Freeze the video. Press the Play or Pause button again to unfreeze the video. The Pause button has no effect on the recording itself. While the video is frozen, the recording is continued in the background, there is no Rewind, Forward, Skip, Replay function.

When Pausing TV or Playing a Video

Note: *You cannot change channels when Pausing TV*

Record button: Stop current action and start a recording

Stop button: Stop playing or Exit pause mode and close the PVR tray (as the Back/Exit button)

Play button: Play the recorded TV or TV from the pause buffer (if PVR tray opened). Play and Pause button have alternatively the same function.

<< (Rewind): Play backwards at 8x speed. Clicking again will play paused TV or recorded TV at 1x

>> (Forward): Play forward at 2x speed. Clicking again will play forward at 8x, then back to 1x

Pause button: Start Pause-Mode (TimeShift). Press Play or Pause again to continue watching from where you left off

Page 14

>I (Skip): Skips ahead in the Pause buffer by 10 seconds per click. Holding the Skip button will auto-repeat, and advances the video about 10 minutes per 15 seconds the button is depressed

I< (Replay): Skips backward in the Pause buffer by 10 seconds per click. Holding the Replay button will auto-repeat, and advances the video about 10 minutes per 15 seconds the button is depressed

Quick Jump 0 to 9 buttons: When playing a video, you can quickly skip through the video by pressing the 0-9 buttons. When you press one of these buttons, you will skip to, for example, 10% of the video file when you press '1', 20% of the video file when you press '2' and so forth (% of the length of the file).

During Pause-Mode, any key skips ahead in the Pause buffer to -2 seconds.

Troubleshooting

To uninstall the Driver and Software

To uninstall the software simply run the **hwcwclear** application from the installation CD-ROM and select **remove all wintv software and applications**, also select search all inf files "search all INF files etc". Click **OK** then wait for the black window to close, once closed the software will have been removed.

Error during installation

This is caused by a failure to load the WinTV-USB2-Stick drivers. Uninstall the software (as above) and then follow the instructions from page 3. If this still give you an error message move the WinTV-USB2-Stick to a different USB port and re-install the drivers again.

TV display has problems (e.g. no picture but with sound or blurred image)

With the WinTV application closed click on the WinTV program group (Start / All Programs / Hauppauge WinTV) there is a utility called "Primary". Set it to one of the other options and then close using the "X" and re-start WinTV. If it is still the same try another option.

Under Windows Media Centre application, I get the error message "Decoder Error"

This message is normally caused by incorrectly installed MCE compatible software decoders or VGA display drivers. Please check that you have the latest MCE certified decoder/ drivers installed with the software or hardware manufacturer.

Page 15

● **Recording options:** click on Record to File to record your show. Leave this button unchecked to watch TV at the requested time. You can also name your file to record.

Once these are set, click **Set Program**. You can add more Events, clicking Set Program after each event is set.

When you are finished click **Close**. The WinTV program does not have to be running for the Scheduler to work, but you PC need to be turned on. If WinTV is not running, it takes about 10 seconds to start WinTV and to start the recording of TV.

8. Installing the Remote Control

To use the remote control, follow these steps:

1. Insert the batteries into the **Infrared Remote control**.
2. Ensure the IR icon is on the start bar - **IR.exe** is loaded when Windows starts only if your WinTV is connected.

Note: *If you don't see the WinTV Remote icon in the system tray or if you need to reset the remote control application, select "Restart IR" from the Start / All Programs / Hauppauge WinTV directory. You should restart the IR program each time you plug your WinTV.*

Checking the function of the IR Remote

Point the Remote transmitter at the Remote control receiver (the little eye on your WinTV Stick) and press the "Go" button. This should open the "WinTV Remote" menu. Press the "OK" button to start the WinTV application.

Note: *The WinTV application only responds to the remote control, if it is the active window. If the WinTV application is not the active Window, press the TV button on the remote, to bring the WinTV window into the foreground.*

Note: *If you have a Windows Media Center PC and you do not have a Media Center Remote you can use the Hauppauge Remote instead (the remote is not Media Center certified and some functionality may not be available).*

Page 12

FCC Statement

Radio Interference Statement:

WinTV have been tested and found to comply with the limits for a Class B digital device, pursuant to part 15 of the FCC Rules. These limits are designed to provide reasonable protection against harmful interference in a residential installation. This equipment generates, uses, and can radiate radio frequency energy and cause harmful interference to radio communications. However, there is no guarantee that interference will not occur in a particular installation. If this equipment does cause harmful interference to radio or television reception, which can be determined by turning the equipment off and on, the user is encouraged to try to correct the interference by one or more of the following measures:

- reorient or relocate the receiving antenna.
- increase the separation between the equipment and receiver.
- connect the equipment into an outlet on a circuit different from that to which the receiver is connected.
- consult the dealer or an experienced radio/TV technician for help.

FCC ID: H90WINTV

CAUTION: Changes or modifications not expressly approved by the party responsible for compliance to the FCC Rules could void the user's authority to operate the equipment.

CE Statement: This equipment has been tested and complies with EN 55013, EN 55020 and IEC 801-3 part 3 standards.

Waste Electrical and Electronic Equipment (WEEE)

The device may not be disposed of with household rubbish. This appliance is labeled in accordance with European Directive 2002/96/EG concerning used electrical and electronic appliances (Waste Electrical and Electronic Equipment - WEEE). The guideline determines the framework for the return and recycling of used appliances as applicable throughout the EU. To return your used device, please use the return and collection systems available to you.

Page 16