

OPTALIGN® PLUS

ALI 5.000

The new laser shaft alignment tool

- ♦ Take alignment readings with only 3 keys!
- ♦ Patented one-beam technology saves setup time & effort!
- ♦ The industry's smallest sensors fit into tight spaces!
- ♦ Patented EZ-Sweep® measurement technique eliminates backlash problems!
- ♦ Only one cable to connect - without tangling!
- ♦ TolChek® 'smiley' shows alignment condition at a glance!
- ♦ Automated reporting via direct printer connection!
- ♦ Nonvolatile memory stores alignment jobs, accepts advance setups from PC.
- ♦ Intrinsically safe version also available!



Better alignment with less effort for longer machine life

Laser shaft alignment offers 10 to 100 times the accuracy of conventional methods. More importantly, this unmatched precision pays off big in terms of extended machine life and reduced alignment effort.

Now you can give all of your machines the benefits of laser shaft alignment: OPTALIGN® PLUS puts fast, reliable alignment within everyone's reach through use of universal brackets, simplified three-key measurement, on-screen user guidance and economical, timesaving PERMABLOC® precut shims. And the ultra-compact, lightweight components can get you out of just about any 'tight squeeze' situation!

With the same ease of use, the system handles even advanced needs such as thermal growth compensation and alignment of spacer shafts and vertical/flange-mounted machines. Let OPTALIGN® PLUS save you the hassle of calculating alignment corrections and tolerances – and double the MTBF of motor/pump sets!

Flexible shaft rotation with OPTALIGN® PLUS

PRÜFTECHNIK's patented EZ-Sweep® measurement method lets you determine alignment in seconds simply by turning the shafts from any angular position to any other position in one continuous sweep. The transducer automatically takes a vast number of readings, even over just a few degrees of rotation – perfect for handling blocked measurement positions and hard-to-turn shafts!

Award-winning innovation

DESIGN
AWARD
WINNER
1 9 9 7



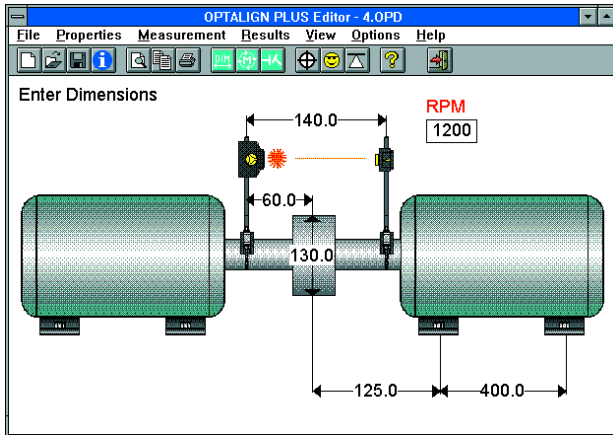
OPTALIGN® PLUS has won several prestigious awards for outstanding functionality and industrial design, including 'Best New Product' at the 1997 Plant Maintenance and Engineering Show in Chicago and the coveted iF seal of approval from Industrie Forum Design Hannover.



PRÜFTECHNIK AG - Alignment

OPTALIGN® PLUS product information - page 2

Total alignment control via PC



The optional OPTALIGN® PLUS Commander program (ALI 5.250SET) lets you set up alignment jobs in advance, permanently archive measurement files, and create versatile customized alignment reports for fulfillment of ISO quality standards – all with the convenience of Windows on any standard PC. Perfect for transferring alignment jobs from one OPTALIGN® PLUS unit to another, across a local PC network or across the country!

Calibration checking: traceable to your national standards

Regardless how accurate, all measurement systems should be checked regularly to ensure proper calibration as required by CALI-CHEK T makes it easy for anyone to perform OPTALIGN® PLUS calibration checking, traceable to national or international norms such as ISO 9000, in a matter of minutes. An easy-to-use PC program records results and prints out calibration reports.

For detailed information on features and technical data, please consult the Alignment Product Catalog ALI 9.300 obtainable free of charge from your local PRÜFTECHNIK AG distributor or from our web site at <http://www.pruftechnik.com/request.html>.

PRÜFTECHNIK AG
P.O. Box 12 63
D-85730 Ismaning, Germany
Phone: (+49) 89 99 61 60
Fax: (+49) 89 99 61 62 00
<http://www.pruftechnik.com>



OPTALIGN® PLUS

Transducer

Laser, visible
Safety class
Beam power
Safety precautions
Detector meas. area
Resolution
Environmental protection
Dimensions

Weight

Reflector

Type
Environmental protection
Dimensions

Weight

Control Unit

Environmental protection

Interfaces
Dimensions

Weight, complete kit

Options

Intrinsic safety
approx. U.S. equivalent



ALI 5.000

Ga-Al-As semiconductor laser
Class 2; FDA 21CFR 1000 & 1040
< 1 mW
Do not look into laser beam
unlimited, dynamically extendible
1 µm
IP 67 (submersible, dustproof)
approx. 107 x 70 x 49 mm
4 1/4" x 2 3/4" x 2"
only about 177g / 6 1/2 oz.

90° roof prism
IP 67 (submersible, dustproof)
approx. 100 x 41 x 35 mm
4" x 1 5/8" x 1 3/8"
approx. 65g / 2 1/2 oz.

IP 65 (water spray resistant,
dustproof - except for sealed
battery compartment); fully
electrically insulated
1 x sensor; 1 x printer/PC (serial)
approx. 145 x 290 x 67 mm
5 3/4" x 11 1/2" x 2 3/4"
only about 6.8 kg / 15.2 lb.!

EEx ib IIC T4, Zone 1
NEC Article 500-4, Class 1,
Division 1, groups D,C,B,A and
special safeguards T4.

The OPTALIGN® PLUS standard package ALI 5.000 contains the following parts:

OPTALIGN PLUS control unit, incl. stand and RS-232 dust cap	ALI 5.200
OPTALIGN PLUS transducer, incl. dust cap	ALI 5.100
OPTALIGN PLUS reflector, incl. dust cap	ALI 5.110
Transducer connection cable	ALI 3.581-2
Compact chain-type bracket	ALI 2.892set
Short instructions	ALI 9.561G
Operating instructions	ALI 9.560G
PC/printer cable	ALI 5.221
Serial/parallel converter	ALI 5.220
IBM PC cable adapter (25M-9F)	ALI 3.265
6x 1.5V battery (IEC LR6 / 'AA')	90 022
9V battery (6LR 61)	90109
Beam deflector	ALI 5.106
Tape measure, mm/inch	ALI 3.588
Optics cleaning cloth	ALI 2.905
OPTALIGN PLUS case	ALI 5.010
OPTALIGN PLUS Commander, unlicensed version	ALI 5.251

Productive maintenance technology